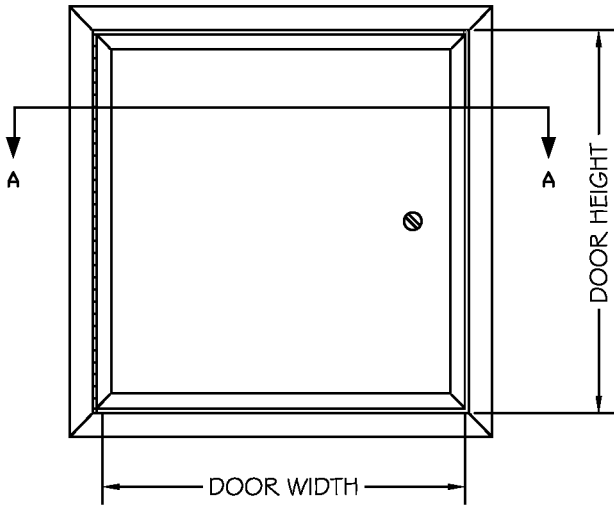


# L-LCP

## SPECIAL LIGHTWEIGHT ACCESS PANEL



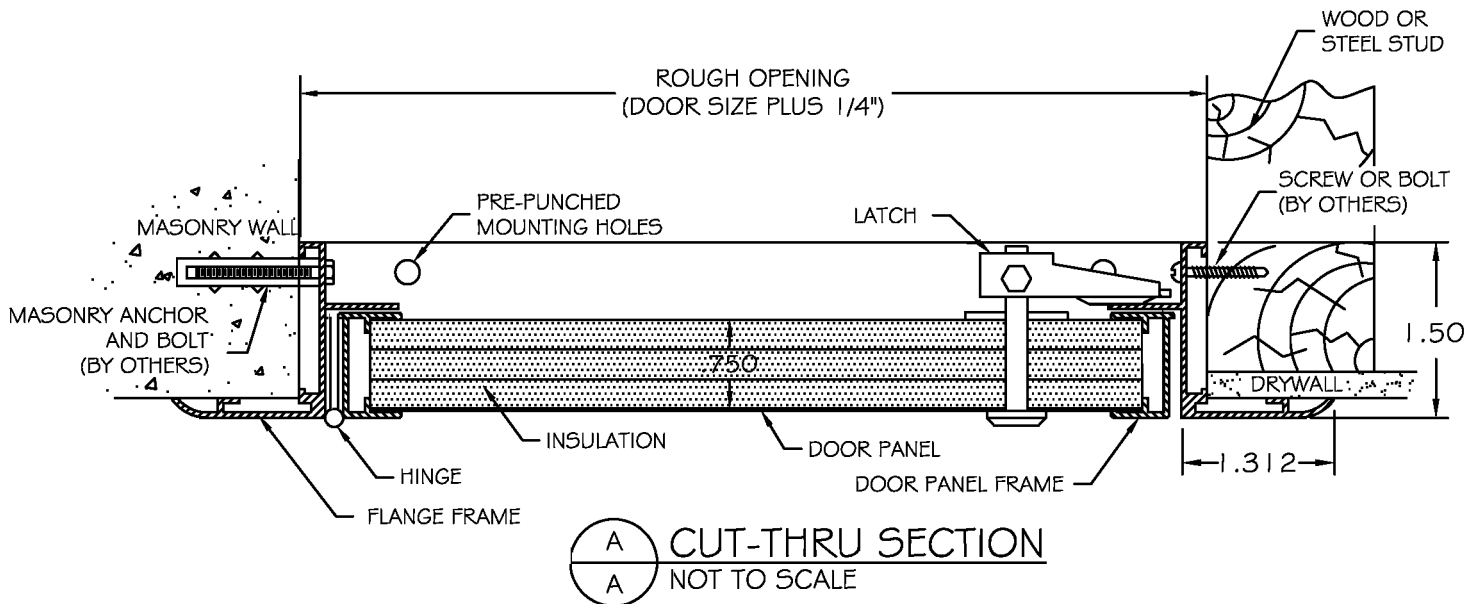
**FRONT ELEVATION**  
NOT TO SCALE

### SPECIFICATIONS

- .045-6063-T5 EXTRUDED ALUMINUM DOOR FRAME
- 26 GA. PRE-FINISHED EMBOSSED GALV. STEEL DOOR
- 3/4" EXTRUDED POLYSTYRENE INSULATION
- .080-6063-T5 EXTRUDED ALUMINUM EXPOSED FLANGE
- CONTINUOUS ALUMINUM PIANO HINGE
- MILL FINISH
- FLUSH, SCREWDRIVER OPERATED CAM LATCH
- WIDTHS EQUAL TO OR GREATER THAN 48" REQUIRE DOUBLE DOOR PANEL CONSTRUCTION

### OPTIONS

- KEY OPERATED CAM LOCK
- NEOPRENE GASKETING



**CUT-THRU SECTION**  
NOT TO SCALE

**LARSEN'S MANUFACTURING CO.**

7421 COMMERCE LANE  
MINNEAPOLIS, MN 55432  
PHONE: 800-527-7367  
FAX: 763-571-6900

PROJECT:			
CONTRACTOR:			
DISTRIBUTOR:			
DRAWN BY: GML	DATE: 11-03-2006	QUANTITY:	TITLE: L-LCP.DOC

# L-LCP SERIES

## SPECIAL LIGHTWEIGHT ACCESS PANEL

### Standard Features:

<b>Door:</b>	26 gauge pre-finished embossed galvanized steel Optional: .063 aluminum panel insert
<b>Frame:</b>	.045 6063-T5 extruded aluminum with rolled 1-5/16" flange
<b>Hinge:</b>	Zinc plated continuous piano type Optional: aluminum continuous piano type
<b>Insulation:</b>	¾" polystyrene with 3.8 r-value at 75 degree F temperature
<b>Latch:</b>	Screwdriver cam latch(es) Optional: key operated cam lock
<b>Finish:</b>	White embossed steel Optional: Mill finish with .063 aluminum panel insert

### Specifications:

Frame shall be .045 6063-T5 extruded aluminum with rolled 1-5/16" flange. Door shall be fabricated from 26 gauge pre-finished embossed galvanized steel (optional: .063 aluminum panel insert with mill finish). Hinges shall be zinc plated continuous piano type (optional: aluminum continuous piano type with aluminum panel insert). Insulation shall be ¾" polystyrene with 3.8 r-value at 75 degree F temperature. Latch(es) shall be screwdriver operated cam type (optional: key operated cam lock). Finish shall be white embossed steel (optional: mill finish with .063 aluminum panel insert).

Installation shall be in accordance with manufacturer's instructions. Manufacturer shall guarantee against defects in material and workmanship for a period of one year.

### Standard Sizes:

Std sizes (in)	Std Sizes (mm)	Weight/Latches
12x12	305x305	4/1
18x18	457x457	7/1
24x24	610x610	10/1
24x30	610x762	9/1
24x36	610x914	12/2
24x48	610x762	16/2
30x30	762x762	12/2
32x32	813x813	13/2
36x36	914x914	16/2
36x48	914x1219	21/2
48x48*	1219x1219	27/4
60x48*	1524x1219	39/4
72x48*	1828x1219	42/4

\*Denote double door construction. All units are hinged on the second dimension (height). Rough opening is door size plus ¼".