

## L-SLA Series



### Slammer Access Doors

**Doors** are designed to provide security access with the strength and durability to withstand abusive and vandal-prone conditions prevalent in many institutions. Without sacrificing security, these doors allow maintenance personnel access to plumbing chases, shut-off valves and electrical apparatus located behind finished walls.

**Door** is fabricated from 10 gauge steel.

**Frame** is 3/16" x 2" x 2" angle steel, welded and with pre-punched mounting holes.

**Latch** is a detention type deadbolt lock with paracentric key, when requested.

**Hinges** are heavy duty and are welded to the door and frame.

**Door** can be provided with a high security, vandal resistant, detention type lock. Doors are manufactured with locks provided by others.

**Finish** is a white prime coat suitable for painting.

### Guide Specification

Provide Larsen's<sup>®</sup> L-SLA Series, Slammer Access Doors (specify model number and options). Access Door shall be fabricated from 10 gauge steel and frame from 3/16" x 2" x 2" angle steel, welded and with pre-punched mounting holes. Door shall have heavy duty hinges welded to the door and frame. Finish shall be a white prime coat suitable for painting.



## MODEL NUMBER AND OPTIONS SELECTION

### BASE MODEL NUMBER

L-SLA Slammer Access Door

### Suffix Options

- LD Lock Provided by Others (1 Prep per Door)
- MAS Masonry Anchor Straps
- MLP Mortise Cylinder Lock (1 Prep per Door)
- FA12 Folger Adams #10 lock
- FA12KEY Folger Adams key for #10 lock

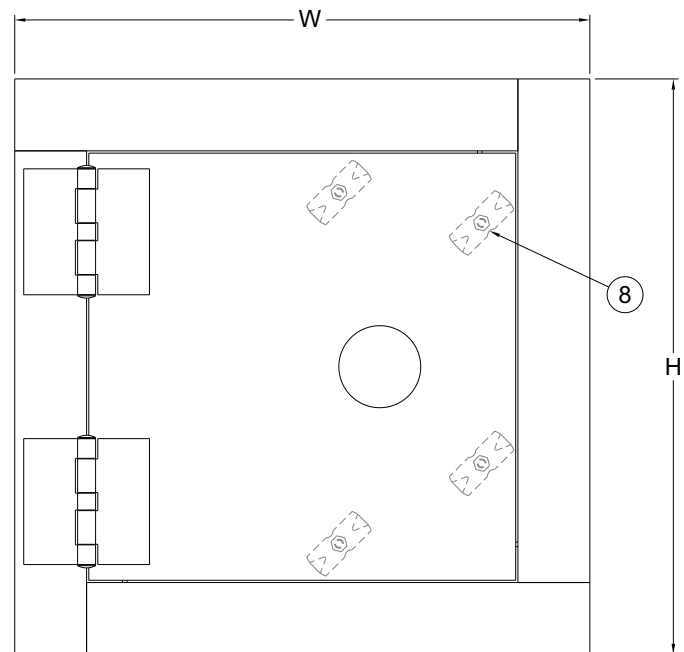
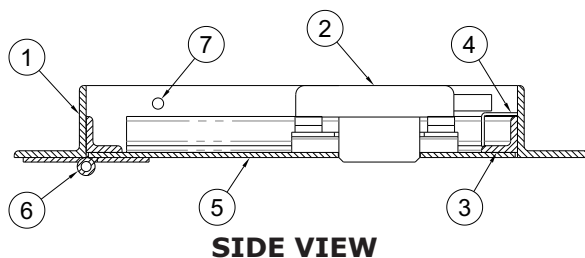
## STANDARD AVAILABLE SIZES

Special sizes available upon request.

NOMINAL DOOR SIZE (W X H)	WALL OPENING (minimum required)	LOCK PREP	WEIGHT	-SDL (Extra Latches)
L-SLA 12" x 12"	12-1/2" x 12-1/2"	1	29 lbs.	0
L-SLA 16" x 16"	16-1/2" x 16-1/2"	1	37 lbs.	0
L-SLA 18" x 18"	18-1/2" x 18-1/2"	1	42 lbs.	0
L-SLA 24" x 24"	24-1/2" x 24-1/2"	1	59 lbs.	0
L-SLA 24" x 36"	24-1/2" x 36-1/2"	1	78.5 lbs.	4
L-SLA 24" x 48"	24-1/2" x 48-1/2"	1	96 lbs.	4
L-SLA 36" x 36"	36-1/2" x 36-1/2"	1	102 lbs.	4
L-SLA 36" x 48"	36-1/2" x 48-1/2"	1	126 lbs.	4

### Notes:

1. Frame
2. Heavy Duty Lock
3. Door Stop
4. Lock Keeper
5. Door
6. Heavy Duty Hinge
7. Mounting Holes
8. SDL (Extra Latches)  
Big Doors Only



**⚠ WARNING: Cancer and Reproductive Harm - www.P65Warnings.ca.gov**

Call Larsen's Manufacturing Co. for current listings and approvals. Dimensions are subject to manufacturer's tolerance and may change without notice. Larsen's assumes no responsibility for use of void or superseded data. © Copyright Larsen's Manufacturing Co.®, Member of Morris Group International® Please visit [www.larsensmfg.com](http://www.larsensmfg.com) for most current specifications.

### SELECTION SUMMARY & APPROVAL FOR MANUFACTURING

Model Number & Options \_\_\_\_\_ Quantity \_\_\_\_\_

Company \_\_\_\_\_ Date \_\_\_\_\_

Contact \_\_\_\_\_ Title \_\_\_\_\_

Approval for Manufacturing/Signature \_\_\_\_\_

**L-SLA**

Revised: 04/15/2019