

## L-FR Series



### Fire Rated Wall Access Doors

**Doors** are Fire Rated by Underwriters Laboratories Inc., for 1-1/2 hours, "B" Label, ANSI-UL 10B standard, and CAN/ULC S104 for 2 hours in walls. Door has a heavy duty spring closer to assure positive latching when panel closes. ***This door is for wall installation only.***

**Door and Frame** are fabricated from 16 gauge, galvanized steel with a white prime coat finish.

**Door** has a heavy duty spring to assure positive latching.

**Frame** is equipped with both masonry anchors and bolt holes to facilitate installation in all types of wall construction.

**Concealed Hinge** operates completely out of sight so that only the door and frame is visible.

**Exterior Latch** is recessed and is operated using a ring attached to the sliding bolt.

**Interior Latch Release Slide** is included enabling door to be opened from the inside.

**Finish** is a white prime coat suitable for painting.

### Guide Specification

Provide Larsen's<sup>®</sup> L-FR Series, Fire Rated Access Doors (specify model number and options). Access door and frame shall be fabricated from 16 gauge, galvanized steel with a white prime coat finish. Hinge shall be concealed type. Door shall have a heavy duty spring to provide positive latching when closed and an interior latch release slide enabling door to be opened from the inside. Exterior latch shall be recessed and operated using ring attached to the sliding bolt. Finish shall be a white prime coat suitable for painting.

## MODEL NUMBER AND OPTIONS SELECTION

### BASE MODEL NUMBER

 L-FR Fire Rated Access Door

### Suffix Options

- CL Cylinder Lock (one per door)
- CLD Cylinder Lock with Dust Shutter (one per door)
- SS Stainless Steel Construction (Type 304 No. 4 Satin Finish)

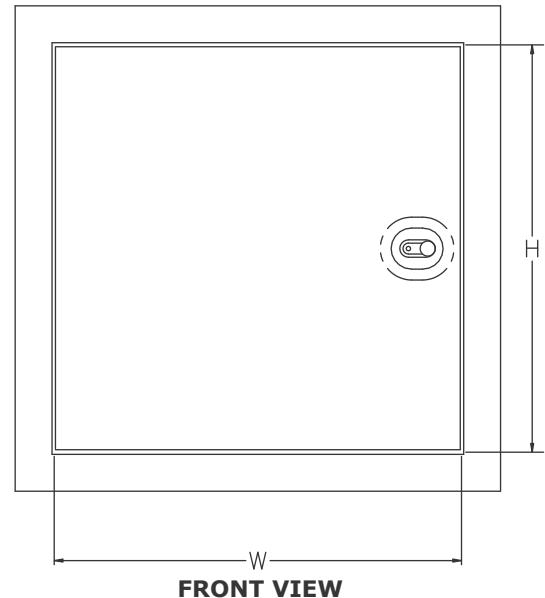
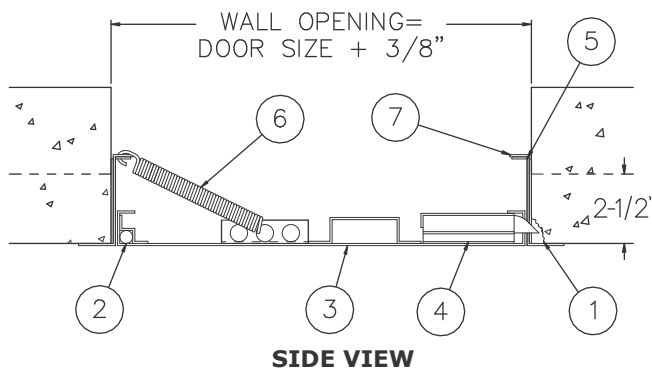
## STANDARD AVAILABLE SIZES

Special sizes available upon request.

NOMINAL DOOR SIZE (W X H)	WALL OPENING (minimum required)	LATCHES	WEIGHT
L-FR 8" x 8"	8-3/8" x 8-3/8"	1	6 lbs.
L-FR 10" x 10"	10-3/8" x 10-3/8"	1	7.5 lbs.
L-FR 12" x 12"	12-3/8" x 12-3/8"	1	9 lbs.
L-FR 12" x 18"	12-3/8" x 18-3/8"	1	10.5 lbs.
L-FR 12" x 24"	12-3/8" x 24-3/8"	1	13 lbs.
L-FR 14" x 14"	14-3/8" x 14-3/8"	1	10 lbs.
L-FR 16" x 16"	16-3/8" x 16-3/8"	1	12.5 lbs.
L-FR 18" x 18"	18-3/8" x 18-3/8"	1	15 lbs.
L-FR 20" x 20"	20-3/8" x 20-3/8"	1	18 lbs.
L-FR 22" x 22"	22-3/8" x 22-3/8"	1	22 lbs.
L-FR 22" x 30"	22-3/8" x 30-3/8"	2	28 lbs.
L-FR 24" x 24"	24-3/8" x 24-3/8"	2	24.5 lbs.
L-FR 24" x 36"	24-3/8" x 36-3/8"	2	33 lbs.
L-FR 24" x 48"	24-3/8" x 48-3/8"	2	42 lbs.
L-FR 30" x 30"	30-3/8" x 30-3/8"	2	33.5 lbs.
L-FR 32" x 32"	32-3/8" x 32-3/8"	2	35 lbs.
L-FR 36" x 36"	36-3/8" x 36-3/8"	2	43 lbs.
L-FR 36" x 48"	36-3/8" x 48-3/8"	2	74 lbs.

### NOTES:

1. CHIP OUT MASONRY TO CLEAR BOLT COVER
2. CONCEALED HINGE
3. DOOR
4. RECESSED LATCH
5. INTERIOR LATCH RELEASE SLIDE
6. CLOSING SPRING
7. FRAME



**⚠ WARNING: Cancer and Reproductive Harm - www.P65Warnings.ca.gov**

Call Larsen's Manufacturing Co. for current listings and approvals. Dimensions are subject to manufacturer's tolerance and may change without notice. Larsen's assumes no responsibility for use of void or superceded data. © Copyright Larsen's Manufacturing Co.®, Member of Morris Group International® Please visit [www.larsensmfg.com](http://www.larsensmfg.com) for most current specifications.

### SELECTION SUMMARY & APPROVAL FOR MANUFACTURING

Model Number & Options \_\_\_\_\_ Quantity \_\_\_\_\_  
 Company \_\_\_\_\_ Date \_\_\_\_\_  
 Contact \_\_\_\_\_ Title \_\_\_\_\_  
 Approval for Manufacturing/Signature \_\_\_\_\_

**L-FR**

Revised: 10/04/23