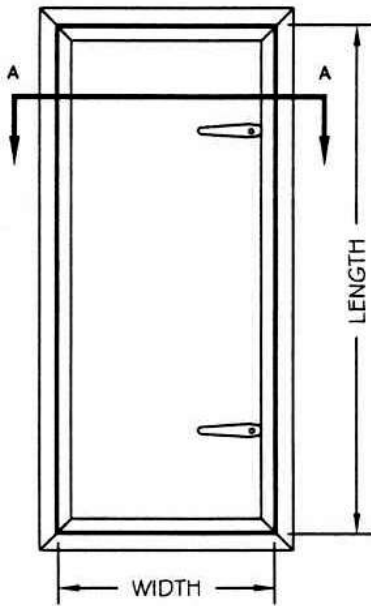


L-XT SERIES

INSULATED EXTERIOR ACCESS PANEL FOR WEATHER RESISTANT APPLICATIONS



FRONT ELEVATION
NOT TO SCALE

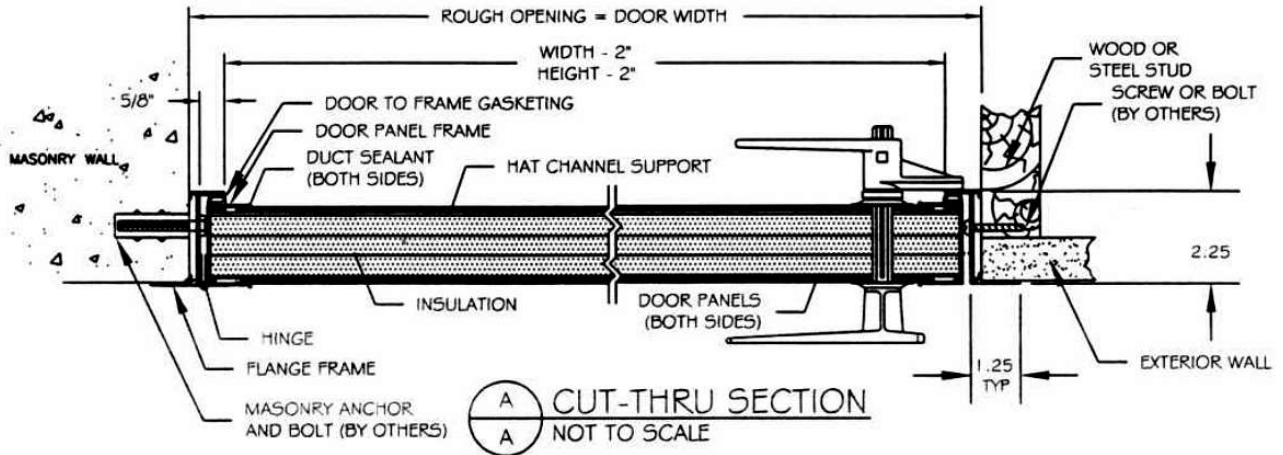
SPECIFICATIONS

- .080-6063-T5 EXTRUDED ALUMINUM EXPOSED FLANGE
- .080-6063-T5 EXTRUDED ALUMINUM DOOR FRAME
- 20 GA. GALV. STEEL DOOR
- 2" FIBERGLASS INSULATION 3/4 LB DENSITY
- STAINLESS STEEL CONTINUOUS PIANO HINGE
- ALUMINUM MATERIAL - MILL FINISH
- GALVANIZED STEEL - PAINT GRIP
- EXTRUDED SANTOPRENE GASKET
- DOOR WILL BE FABRICATED 1/4" UNDER SPECIFIED SIZE
- DUAL ACTING HANDLE(S) - DIE CAST ZINC:

- * 1 ON SIZES UP TO 36" X 24"
- * 2 ON SIZES UP TO 36" X 72" AND 48" X 24"
- * 3 ON SIZES UP TO 39" X 96" AND 48" X 48"
- * 4 ON SIZES UP TO 48" X 96"

OPTIONS

- q KEY OPERATED CHROME PLATED STEEL HANDLE (LOCKABLE FROM FRONT SIDE ONLY)



CUT-THRU SECTION
NOT TO SCALE

LARSEN'S MANUFACTURING CO.

7421 COMMERCE LANE
MINNEAPOLIS, MN 55432
PHONE: 800-527-7367
FAX: 763-571-6900
www.larsenmfg.com

PROJECT:

CONTRACTOR:

ARCHITECT:

DRAWN BY:

DATE:

QUANTITY:

TITLE:

CMR

9-1-01

L-XT.DOC



L-XT – SPECIAL EXTERIOR ACCESS PANEL

L-XT Standard Features:

- Door: 20 gauge galvanized steel
- Flanged Frame: 6063-T5 extruded aluminum
- Door Panel Frame: 6063-T5 extruded aluminum
- Hinge: Zinc plated continuous piano hinge
Optional: stainless steel continuous piano hinge
- Latch: Two dual acting handles operable from inside and out
Optional: Keyed handle for outside
- Finish: Paint grip
- Gasket: Extruded santoprene
- Insulation: 2" thick fiberglass

L-XT Specifications:

Model L-XT exterior access panel for all-purpose applications. Access panel shall be model L-XT, size _____ as manufactured by **Larsens Mfg.** of Minneapolis, MN.

Frame shall be Type 6063-T5 extruded aluminum. Door shall be fabricated with 20 gauge galvanized steel and 2" fiberglass insulation, sandwich type construction. Latch(es) shall be dual acting handles operated from the inside or outside (optional: lockable handle for the exterior). Hinge shall be zinc plated continuous piano type (optional: stainless steel continuous piano hinge). This assembly shall be equipped with extruded santoprene applied to all door stops to ensure weather-tightness. Finish shall be paint grip.

Installation shall be in accordance with manufacturer's instructions. Manufacturer shall guarantee against defects in material and workmanship for a period of one year.

L-XT Standard Sizes:

<i>Std sizes (in)</i>	<i>Std Sizes (mm)</i>	<i># of Latches</i>
12x12	305x305	1
12x24	305x610	1
18x18	457x457	1
22x30	559x762	2
22x36	559x914	2
24x24	610x610	1
24x36	610x914	2
24x48	610x1219	2
24x60	610x1524	2
36x36	914x914	2
36x60	914x1524	2
36x48	914x1219	2
48x48	1219x1219	2
48x60	1219x1524	2

Larsens Manufacturing Company 7421 Commerce Lane Minneapolis, MN 55432
 Ph: 800-527-7367 Fax: 763-571-6900
 Web : www.larsensmfg.com