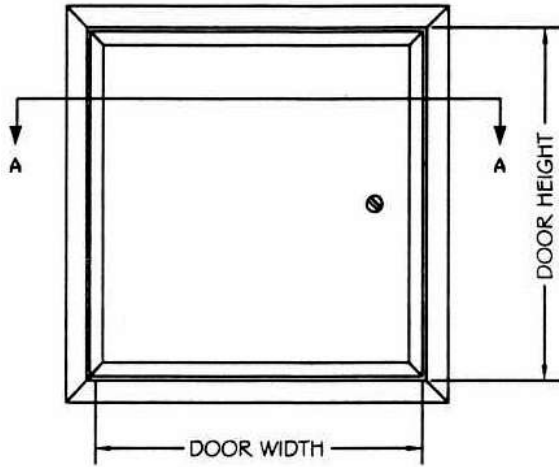


L-LCP

SPECIAL LIGHTWEIGHT ACCESS PANEL



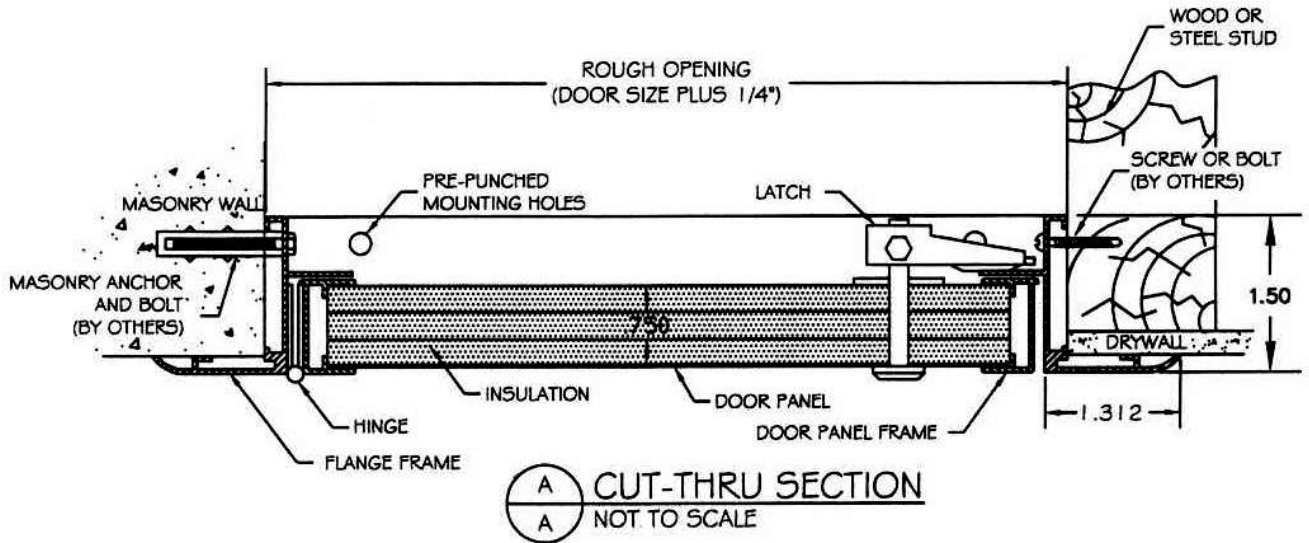
FRONT ELEVATION
NOT TO SCALE

SPECIFICATIONS

- .045-6063-T5 EXTRUDED ALUMINUM DOOR FRAME
- 26 GA. PRE-FINISHED EMBOSSED GALV. STEEL DOOR
- 3/4" EXTRUDED POLYSTYRENE INSULATION
- .080-6063-T5 EXTRUDED ALUMINUM EXPOSED FLANGE
- CONTINUOUS ALUMINUM PIANO HINGE
- MILL FINISH
- FLUSH, SCREWDRIVER OPERATED CAM LATCH
- WIDTHS EQUAL TO OR GREATER THAN 48" REQUIRE DOUBLE DOOR PANEL CONSTRUCTION

OPTIONS

- q KEY OPERATED CYLINDER LOCK
- q NEOPRENE GASKETING



A CUT-THRU SECTION
A NOT TO SCALE

LARSEN'S MANUFACTURING CO. 7421 COMMERCE LANE MINNEAPOLIS, MN 55432 PHONE: 800-527-7367 FAX: 763-571-6900 www.larsensmfg.com				PROJECT:			
				CONTRACTOR:			
				ARCHITECT:			
				DRAWN BY:	DATE:	QUANTITY:	TITLE:
CMR	9-1-01		L-LCP.DOC				



L-LCP – SPECIAL LIGHTWEIGHT ACCESS PANEL

L-LCP Standard Features:

- Door: 26 gauge pre-finished embossed galvanized steel
Optional: .063 aluminum panel insert
- Frame: .045 6063-T5 extruded aluminum with rolled 1-5/16" flange
- Hinge: Zinc plated continuous piano type
Optional: aluminum continuous piano type
- Insulation: ¾" polystyrene with 3.8 r-value at 75 degree F temperature
- Latch: Screwdriver cam latch(es)
Optional: key operated cylinder lock
- Finish: White embossed steel
Optional: Mill finish with .063 aluminum panel insert

L-LCP Specifications:

Model *L-LCP* special lightweight access panel. Access panel shall be model *L-LCP*, size _____ as manufactured by **Larsens Mfg.** of Minneapolis, MN.

Frame shall be .045 6063-T5 extruded aluminum with rolled 1-5/16" flange. Door shall be fabricated from 26 gauge pre-finished embossed galvanized steel (optional: .063 aluminum panel insert with mill finish). Hinges shall be zinc plated continuous piano type (optional: aluminum continuous piano type with aluminum panel insert). Insulation shall be ¾" polystyrene with 3.8 r-value at 75 degree F temperature. Latch(es) shall be screwdriver operated cam type (optional: key operated cylinder lock). Finish shall be white embossed steel (optional: mill finish with .063 aluminum panel insert).

Installation shall be in accordance with manufacturer's instructions. Manufacturer shall guarantee against defects in material and workmanship for a period of one year.

L-LCP Standard Sizes:

<i>Std sizes (in)</i>	<i>Std Sizes (mm)</i>	<i>Weight/Latches</i>
12x12	305x305	4/1
18x18	457x457	7/1
24x24	610x610	10/1
24x30	610x762	9/1
24x36	610x914	12/2
24x48	610x762	16/2
30x30	762x762	12/2
32x32	813x813	13/2
36x36	914x914	16/2
36x48	914x1219	21/2
48x48*	1219x1219	27/4
60x48*	1524x1219	39/4
72x48*	1828x1219	42/4

**Denote double door construction. All units are hinged on the second dimension (height). Rough opening is door size plus 1/4".*

Larsens Manufacturing Company 7421 Commerce Lane Minneapolis, MN 55432
 Ph: 800-527-7367 Fax: 763-571-6900
 Web : www.larsensmfg.com