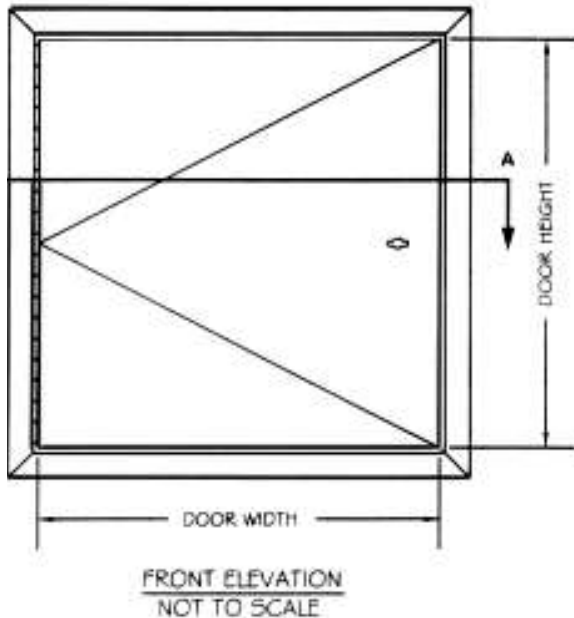


L-FRAP SERIES

INSULATED FIRE RATED ACCESS PANELS FOR
WALLS AND CEILINGS - ALL SURFACES



SPECIFICATIONS

- 16 GAUGE (1.520mm) COLD ROLLED STEEL FRAME
- 20 GAUGE (.912mm) COLD ROLLED STEEL DOOR
- 2" THICK FIRE RATED INSULATION
- 1" WIDE EXPOSED FLANGE
- PHOSPHATE DIPPED WITH BAKED ON RUST INHIBITIVE GRAY PRIME FINISH
- FLUSH CONTINUOUS PIANO HINGE
- SPRING DOOR CLOSURE
- FRAMES PROVIDED WITH .25" (6.25mm) MOUNTING HOLES
- FLUSH KEY / METAL KNURLED KNOB OPERATED LOCK
- INTERIOR RELEASE MECHANISM

OPTIONS

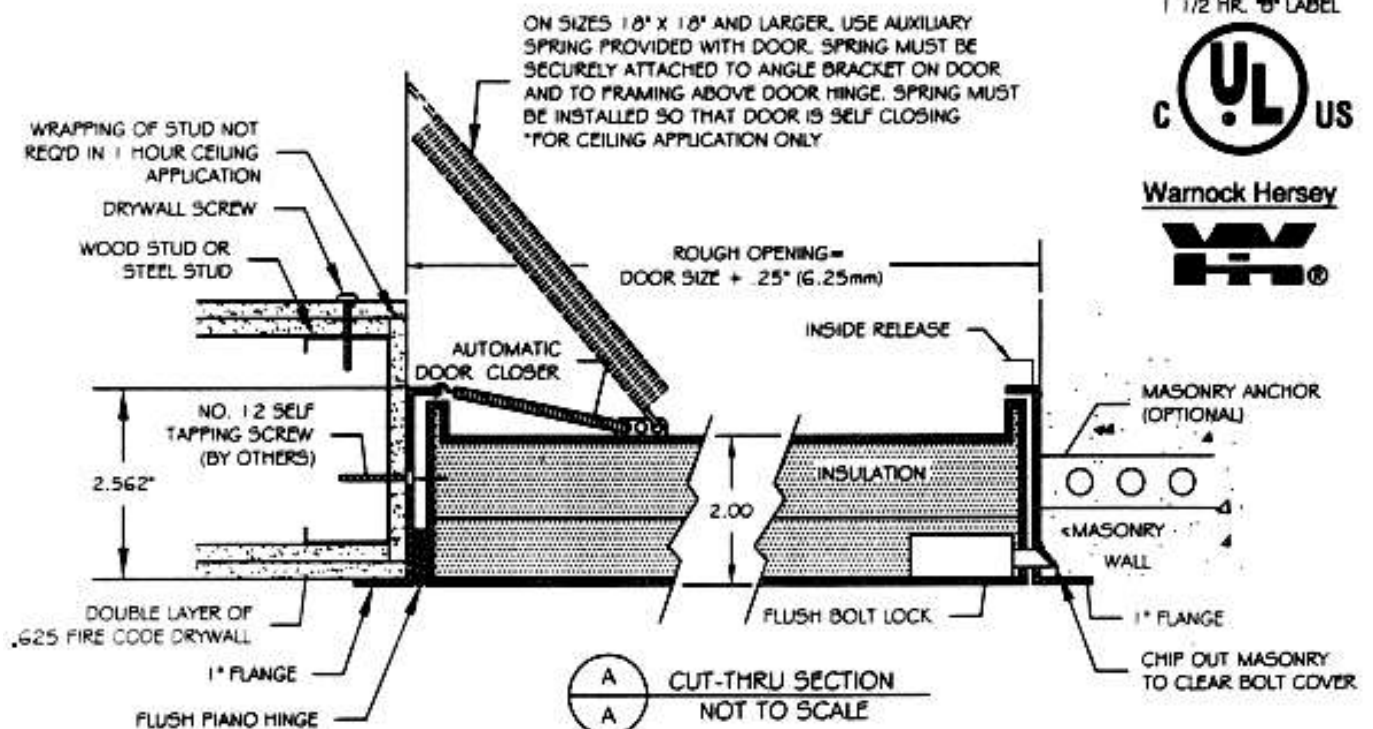
- GALVANIZED BONDERIZED STEEL
- STAINLESS STEEL WITH #4 SATIN POLISH FINISH
- STAINLESS STEEL CONTINUOUS PIANO HINGE WITH STAINLESS STEEL PIN (AVAILABLE ON STAINLESS STEEL PANELS ONLY)
- CONCEALED PIN HINGE
- PREPARATION FOR 1.125" MORTISE CYLINDER (CYLINDER PROVIDED BY OTHERS OR BY LARSENS)

LISTINGS

1 1/2 HR. "B" LABEL



Warnock Hersey



LARSEN'S MANUFACTURING CO. 7421 COMMERCE LANE MINNEAPOLIS, MN 55432 PHONE: 800-527-7367 FAX: 763-571-6900 www.larsensmfg.com				PROJECT:			
				CONTRACTOR:			
				ARCHITECT:			
				DRAWN BY:	DATE:	QUANTITY:	TITLE:
CMR	9-1-01		L-FRAP(DW).DOC				



L-FRAP – ALL PURPOSE FIRE RATED ACCESS PANEL

L-FRAP Standard Features:

- Door: 20 gauge (.912 mm thick) cold rolled steel
- Frame: 16 gauge (1.52 mm thick) cold rolled steel with 1" flange
- Hinge: Flush continuous piano hinge
- Latch: Knurled knob/key operated latch bolt
Optional: mortise cylinder preparation (cylinder provided by Larsens or others)
- Finish: Phosphate dipped with factory applied prime coat
Optional: galvanized bonderized steel or stainless steel with #4 satin polish finish
- Insulation: 2" thickness fire rated mineral fiber

L-FRAP Specifications:

Model L-FRAP fire rated access panel for all-purpose applications. Access panel shall be model L-FRAP, size _____ as manufactured by **Larsens Mfg.** of Minneapolis, MN.

Frame shall be 16 gauge cold rolled steel with 1" flange. Door shall be fabricated from 20 gauge cold rolled steel, insulated sandwich type construction. Door shall be self-latching with automatic closer and interior latch release mechanism. Hinge shall be flush continuous piano type. Latch(es) shall be a knurled knob/key operated latch bolt (optional: preparation to receive 1-1/8" mortise cylinder – cylinder provided by Larsens or others). This assembly shall carry a 1-1/2 hour U.L. "B" label for walls (250 degrees maximum temperature rise, 30 minutes) and carry a 3 hour Warnock Hersey label for ceilings rated 3 hours or less. Finish shall be phosphate dipped with factory applied prime coat (optional: galvanized bonderized steel or stainless steel with #4 satin polish finish).

Installation shall be in accordance with manufacturer's instructions. Manufacturer shall guarantee against defects in material and workmanship for a period of one year.

L-FRAP Standard Sizes:

<i>Std sizes (in)</i>	<i>Std Sizes (mm)</i>	<i>Weight/Latches</i>	<i>Std Sizes (in)</i>	<i>Std Sizes (mm)</i>	<i>Weight/Latches</i>
08x08	203x203	11/1	22x30	559x762	32/1
10x10	254x254	14/1	22x36	559x914	39/2
12x12	305x305	17/1	24x24	610x610	29/1
12x18	305x457	25/1	24x30	610x762	36/1
12x24	305x610	28/1	24x36	610x914	40/2
14x14	356x356	16/1	24x48*	610x1219	53/2
16x16	406x406	18/1	30x30*	762x762	49/1
18x18	457x457	20/1	32x32*	813x813	51/1
18x24	457x610	39/1	36x36*	914x914	58/2
20x30	508x762	30/1	36x48*	914x1219	79/2
22x22	559x559	27/1	48x48*	1219x1219	100/2

*All units are hinged on the second dimension (height). Rough opening is door size plus 1/4".
Exceeds maximum size to carry a Warnock-Hersey label for ceilings.

Larsens Manufacturing Company 7421 Commerce Lane Minneapolis, MN 55432
 Ph: 800-527-7367 Fax: 763-571-6900
 Web: www.larsensmfg.com