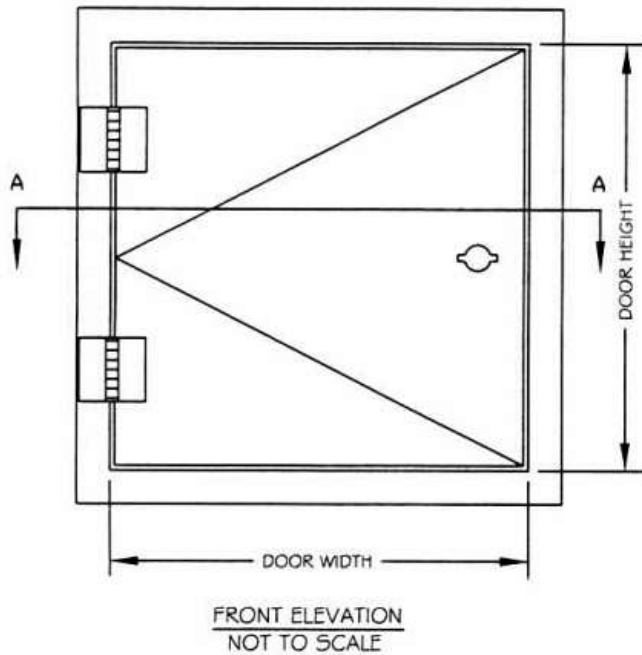


# L-DPH SERIES

HIGH SECURITY NON-RATED ACCESS PANEL FOR ALL SURFACES

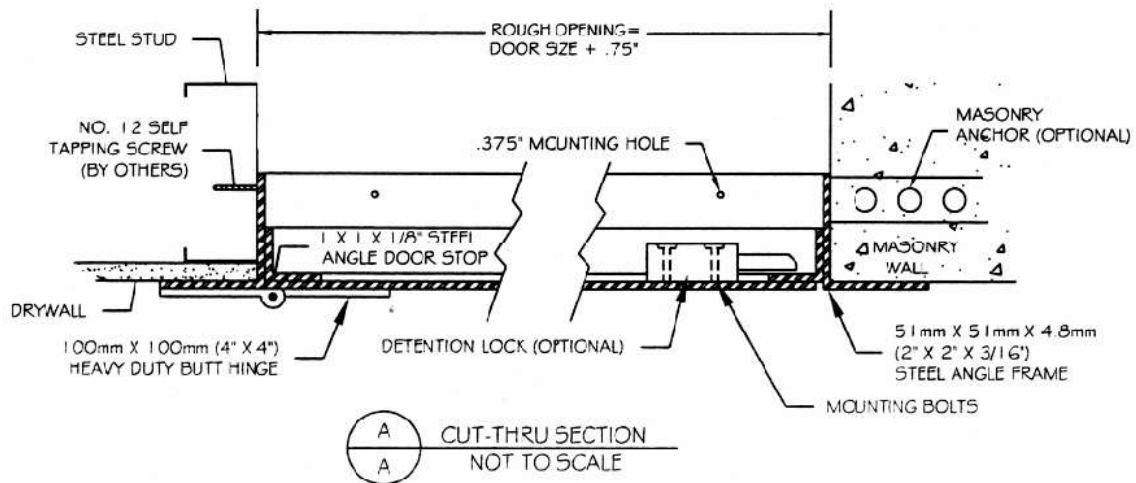


## SPECIFICATIONS

- 51 mm x 51 mm x 4.8mm (2" X 2" X 3/16") STEEL ANGLE FRAME
- 25mm x 25mm x 3.2mm ( 1" X 1" X 1/8") STEEL ANGLE DOOR STOP
- 10 GAUGE STEEL PLATE DOOR
- ALL EXPOSED JOINTS WELDED, FILLED AND GROUND SMOOTH
- PHOSPHATE DIPPED WITH BAKED ON RUST INHIBITIVE PRIME FINISH
- 102mm x 102mm (4" X 4") BUTT HINGE WELDED TO DOOR AND FRAME
- PINNED ALLEN HEAD SECURITY SCREWS (STANDARD ON PANELS 24 X 24 AND LARGER)

## OPTIONS

- q PREPARATION FOR 1.125" MORTISE CYLINDER (CYLINDER PROVIDED BY OTHERS OR BY LARSENS)
- q PREPARATION FOR HEAVY DUTY DETENTION DEAD BOLT LOCK (LOCK PROVIDED BY OTHERS OR BY LARSENS)
- q MASONRY ANCHORS ATTACHED



### LARSEN'S MANUFACTURING CO.

7421 COMMERCE LANE  
 MINNEAPOLIS, MN 55432  
 PHONE: 800-527-7367  
 FAX: 763-571-6900  
[www.larsensmfg.com](http://www.larsensmfg.com)

PROJECT:

CONTRACTOR:

ARCHITECT:

DRAWN BY:

CMR

DATE:

9-1-01

QUANTITY:

TITLE:

L-DPH.DOC



**L-DPH – HIGH SECURITY ACCESS PANEL  
FOR ALL-PURPOSE APPLICATIONS**

***L-DPH Standard Features:***

---

Door: 10 gauge (3.43 mm thick) cold rolled steel  
 Frame: 2" x 2" x 3/16" (50.8mm x 50.8mm x 4.76mm) steel angle  
 Hinge: Heavy duty butt hinges  
           Optional: Continuous piano hinge  
 Latch: Pinned allen head security screw(s)  
           Optional: mortise cylinder preparation (cylinder provided by Larsens or others) or  
           heavy duty detention lock preparation (deadbolt lock provided by Larsens or  
           others)  
 Finish: Phosphate dipped with factory applied prime coat

***L-DPH Specifications:***

---

Model *L-DPH* high security access panel for all-purpose applications. Access panel shall be model *L-DPH*, size \_\_\_\_\_ as manufactured by **Larsens Mfg.** of Minneapolis, MN.

Frame shall be 2" x 2" x 3/16" (50.8mm x 50.8mm x 4.76mm) steel angle. Door shall be fabricated from 10 gauge (3.43 mm thick) cold rolled steel. Hinges shall be heavy duty butt type hinges (optional: continuous piano type). Latch(es) shall be a pinned allen head security screw(s) (optional: prepared to receive 1-1/8" mortise cylinder – cylinder provided by Larsens or others; or detention preparation to receive heavy duty deadbolt lock – deadbolt lock provided by Larsens or others). Finish shall be phosphate dipped with factory applied prime coat.

Installation shall be in accordance with manufacturer's instructions. Manufacturer shall guarantee against defects in material and workmanship for a period of one year.

***L-DPH Standard Sizes:***

---

<i>Std sizes (in)</i>	<i>Std Sizes (mm)</i>	<i>Weight/Latches</i>
<b>12x12</b>	305x305	<b>35/1</b>
<b>16x16</b>	406x406	<b>44/1</b>
<b>18x18</b>	457x457	<b>49/1</b>
<b>22x30</b>	559x762	<b>69/2</b>
<b>24x24</b>	610x610	<b>65/2</b>
<b>24x36</b>	610x914	<b>80/3</b>
<b>24x40</b>	610x1016	<b>120/4</b>
<b>24x48</b>	610x1219	<b>125/4</b>
<b>36x36</b>	914x914	<b>130/5</b>

All units are hinged on the second dimension (height). Rough opening is door size plus 1/4".

**Larsens Manufacturing Company** 7421 Commerce Lane Minneapolis, MN 55432  
 Ph: 800-527-7367 Fax: 763-571-6900  
 Web: [www.larsensmfg.com](http://www.larsensmfg.com)