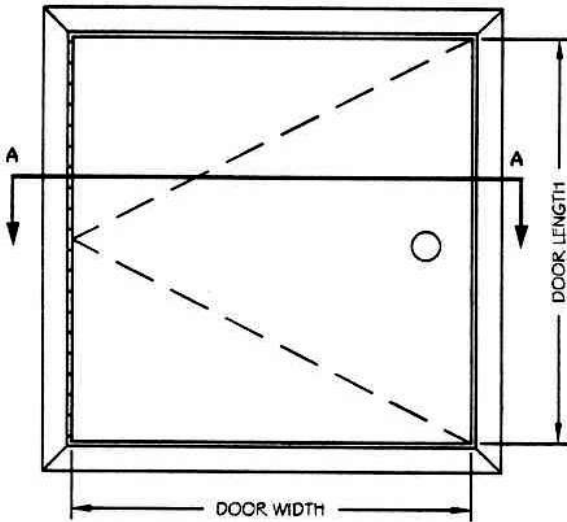


# L-DPFB SERIES

SECURITY INSULATED FIRE RATED  
ACCESS PANELS FOR WALLS ONLY - ANY SURFACE



FRONT ELEVATION  
NOT TO SCALE

## LISTINGS

1 1/2 HR. "B" LABEL

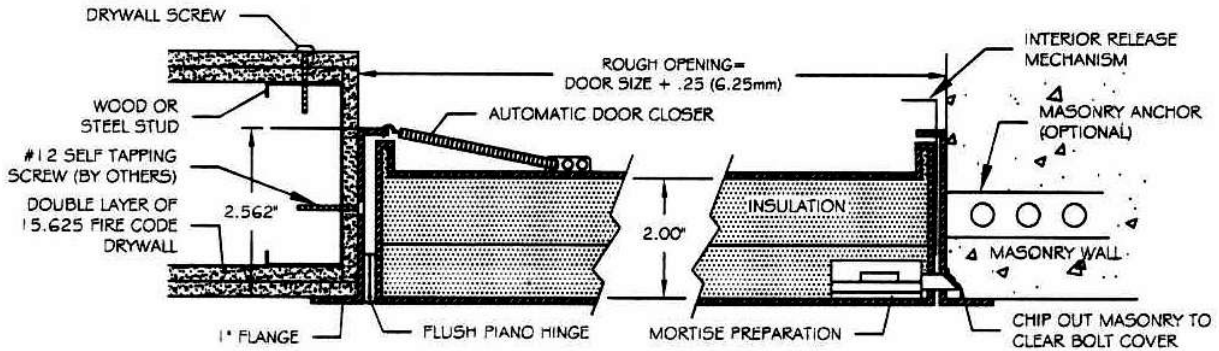


## SFCIFICATIONS

- 16 GAUGE COLD ROLLED STEEL FRAME
- 14 GAUGE COLD ROLLED STEEL DOOR
- 2" THICK FIRE RATED INSULATION
- 1" WIDE EXPOSED FLANGE
- SPRING DOOR CLOSURE
- PREPARATION FOR 1.125" MORTISE CYLINDER (CYLINDER PROVIDED BY OTHERS OR BY LARSENS)
- FRAMES PROVIDED WITH .25" (6.25mm) MOUNTING HOLES
- PHOSPHATE DIPPED, WITH BAKED ON RUST INHIBITIVE GRAY PRIME FINISH
- INTERIOR RELEASE MECHANISM

## OPTIONS

- q GALVANIZED BONDERIZED STEEL
- q STAINLESS STEEL (TYPE 304) WITH #4 SATIN POLISH FINISH
- q STAINLESS STEEL CONTINUOUS PIANO HINGE WITH SST PIN (AVAILABLE ON STAINLESS STL. PANELS ONLY)
- q CONCEALED PIN HINGE
- q DETENTION LOCK PROVIDED BY OTHERS (OR BY LARSENS) MASONRY ANCHORS



A CUT-THRU SECTION  
A NOT TO SCALE

### LARSEN'S MANUFACTURING CO.

7421 COMMERCE LANE  
MINNEAPOLIS, MN 55432  
PHONE: 800-527-7367  
FAX: 763-571-6900  
[www.larsensmfg.com](http://www.larsensmfg.com)

PROJECT:

CONTRACTOR:

ARCHITECT:

DRAWN BY:

CMR

DATE:

9-1-01

QUANTITY:

TITLE:

L-DPFB



**L-DPFB – ALL PURPOSE SECURITY FIRE RATED ACCESS PANEL  
(FOR WALLS ONLY)**

**L-DPFB Standard Features:**

---

- Door: 14 gauge (1.90 mm thick) cold rolled steel
- Frame: 16 gauge (1.52 mm thick) cold rolled steel with 1" flange
- Hinge: Flush continuous piano hinge
- Latch: Mortise cylinder preparation (cylinder provided by Larsens or others)
- Finish: Phosphate dipped with factory applied prime coat  
Optional: galvanized bonderized steel or stainless steel with #4 satin polish finish
- Insulation: 2" thick fire rated mineral fiber

**L-DPFB Specifications:**

---

Model L-DPFB security fire rated access panel for all-purpose applications (walls only). Access panel shall be model L-DPFB, size \_\_\_\_\_ as manufactured by **Larsens Mfg.** of Minneapolis, MN.

Frame shall be 16 gauge cold rolled steel with 1" flange. Door shall be fabricated from 14 gauge cold rolled steel, insulated sandwich type construction. Door shall be self-latching with automatic closer and interior latch release mechanism. Hinge shall be flush continuous piano type. Latch(es) shall be prepared to receive 1-1/8" mortise cylinder – cylinder provided by Larsens or others (optional: heavy duty detention lock provided by Larsens or others before manufacturing process). This assembly shall carry a 1-1/2 hour U.L. "B" label for walls only. Finish shall be phosphate dipped with factory applied prime coat (optional: galvanized bonderized steel or stainless steel with #4 satin polish finish).

Installation shall be in accordance with manufacturer's instructions. Manufacturer shall guarantee against defects in material and workmanship for a period of one year.

**L-DPFB Standard Sizes:**

---

<i>Std sizes (in)</i>	<i>Std Sizes (mm)</i>	<i>Weight/Latches</i>	<i>Std Sizes (in)</i>	<i>Std Sizes (mm)</i>	<i>Weight/Latches</i>
<b>08x08</b>	203x203	11/1	<b>22x30</b>	559x762	32/1
<b>10x10</b>	254x254	12/1	<b>22x36</b>	559x914	41/2
<b>12x12</b>	305x305	15/1	<b>24x24</b>	610x610	28/1
<b>12x18</b>	305x457	18/1	<b>24x30</b>	610x762	34/1
<b>12x24</b>	305x610	20/1	<b>24x36</b>	610x914	43/2
<b>14x14</b>	356x356	16/1	<b>24x48</b>	610x1219	52/2
<b>16x16</b>	406x406	18/1	<b>30x30</b>	762x762	51/1
<b>18x18</b>	457x457	20/1	<b>32x32</b>	813x813	53/1
<b>18x24</b>	457x610	26/1	<b>36x36</b>	914x914	55/2
<b>20x30</b>	508x762	30/1	<b>36x48</b>	914x1219	75/2
<b>22x22</b>	559x559	28/1	<b>48x48</b>	1219x1219	110/2

*All units are hinged on the second dimension (height). Rough opening is door size plus 1/4".  
These panels are designed for use in wall applications only.*

**Larsens Manufacturing Company** 7421 Commerce Lane Minneapolis, MN 55432  
Ph: 800-527-7367 Fax: 763-571-6900  
Web: [www.larsensmfg.com](http://www.larsensmfg.com)

REV 2-02